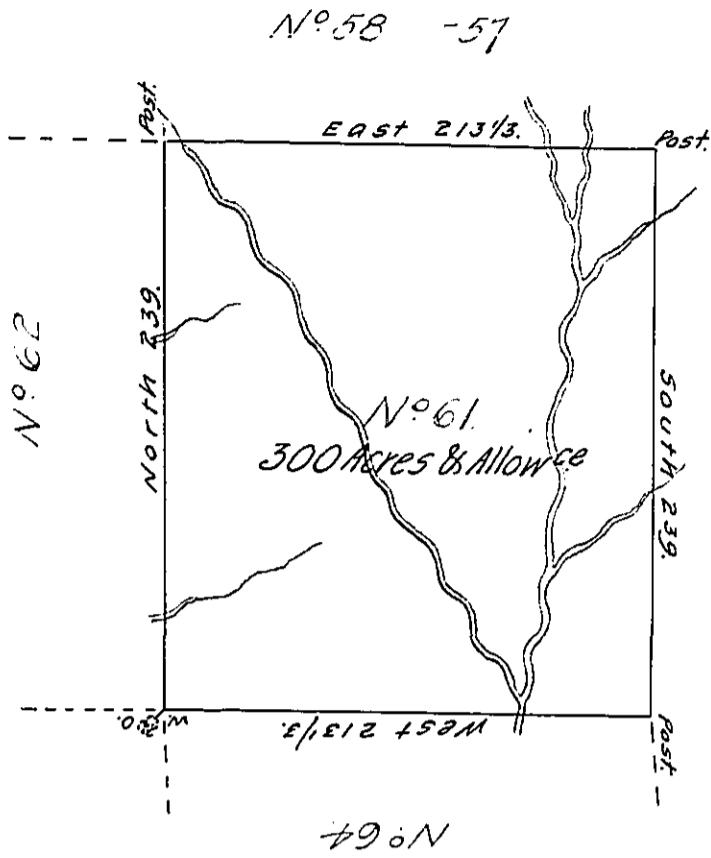


✓



Major-Alexander's part of District N° 3

Situate on the Waters of Brush Creek between the fourteenth & fifteenth Parallel in that that Part of District N° 3 to me Allotted on the North side of the Ohio, being Part of the Land Appropriated for the Redemption of the Certificates of Depreciation &c^d Survey^d in June 1785 Pursuant to Instructions from Jn^o Lukens, Esq^r Surveyor Gen^l dated at Philad. - 5th March 1785.

Nat^l Breeding, D.S.

IN TESTIMONY that the above is a copy of the original remaining on file in the Department of Internal Affairs of Pennsylvania, made conformably to an Act of Assembly approved the 16th day of February, 1833, I have hereunto set my Hand and caused the Seal of said Department to be affixed at Harrisburg, this seventeenth day of April 1906.

Geo. N. Brown
Secretary of Internal Affairs.